

# CAMERA READY MANUSCRIPT GUIDELINES FOR THE THIRD EUROPEAN CONFERENCE ON STRUCTURAL CONTROL

Author<sup>1</sup>, Author<sup>2</sup>, Author<sup>3</sup>

<sup>1</sup>*Affiliation*  
<sup>2,3</sup>*Affiliation*

This sample article provides information and instructions for preparing in a standard format the papers to be included in the Proceedings Volume of the Third European Conference on Structural Control, 3ECSC. It illustrates the paper layout, and describes points you should notice before you prepare your paper. In order to enable the publisher to bring the article into the uniform layout and style, authors are kindly requested to follow the instructions given below.

**Keywords:** *keywords list*

## 1 Title of Section (e.g. General Introduction)

Each paper must be typed on white paper sheets of A4 size (210mm × 297mm) on one side only. The paper should be prepared with an electronic text processing system. We strongly recommend the use of **Microsoft Word** processing system.

Two camera-ready hard copies of the manuscript should be handed over to the Organizers of 3ECSC during the Conference, together with an electronic copy on a CD-ROM. Please write first author and number of page on the back side of each page of the hard copies with a soft pencil, and note authors, operating system and word processing system on top of the CD-ROM. A separate desk will be provided for handing over the hard and electronic copies of the manuscripts. This desk will be opened during the Conference hours. We will print the Proceedings Volumes of the Conference by means of offset printing using the submitted copies prepared by authors. Only papers presented at the Conference will be accepted for publication.

## 2 Preparation of the Camera Ready Paper

The paper should be typed using 10pt size Times New Roman letter with single spacing between text lines. The upper and lower margin should be 25mm, the left and right one 20mm.

New paragraphs are to be indented 63mm from the left-hand margin, with no extra space between paragraphs.

### 2.1 Front Matter

---

<sup>1</sup> Professor, [theEmail@goes.here](mailto:theEmail@goes.here)

<sup>2</sup> Research Scientist, [theEmail@goes.here](mailto:theEmail@goes.here)

<sup>3</sup> Post-Doc Associated, [theEmail@goes.here](mailto:theEmail@goes.here)

### 2.1.1 Title, affiliation(s), abstract and keywords

The first line of title is located 2 lines (24pt) from the top of printing box. This space is reserved for Editorial Heading.

The title of the paper should be written centered, single spaced, in 14pt size bold capital letters. The title must not exceed three lines. The author's name should include first and middle (if any) name initial, and surname. It should be written centered, in 12pt size bold face letter, one line (12pt) below the title.

The title of authors and their Email address should appear in the footnote of the first left column. Author's affiliation should be written centered, in 11pt size italic letter with one line (12pt) space below the list of authors. Following the author's names and affiliations put the abstract no more than 150 words. Set up additional 10mm left and right margins.

The abstract should be written in 10pt size letter with one line (12pt) space below the affiliations. Please, write no more than five keywords. The 12pt space should separate the keywords line from the abstract.

This line should be written left aligned to the margin of abstract and must begin with words '**Keywords:**' written in the normal 10pt size bold letter. Keywords should be written in 10pt size, italic letter (see above).

### 2.2 Diagrams, Tables and Figures

Care should be taken over the preparation of diagrams, tables and figures. Tables must be set as part of the text. All tables must have a caption centered over

the table and should be numbered sequentially and start with ‘**Table x:**’ (x stands for a number).

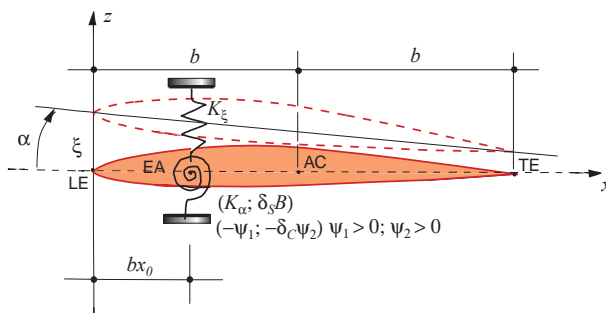
Figures will either be entered in one column or two columns and should be **80mm** or **170mm** wide respectively. A minimum line width of 1pt is required at actual size. Annotations should be in 10pt with the first letter only capitalized. All figures should be numbered sequentially and captioned. The caption should be written centered below the figure and start with ‘**Figure x:**’ (x stands for a number). Figures should be embedded in the document. Please leave an extra space of 10pt before and after each table and figure.

Example of Table 1:

**Table 1:** Airfoils and flow parameters

1-DOF Plunging Airfoil	
$b = 30.5\text{mm}$	$\rho = 16.4 \text{ kg/m}^3$
$\zeta = 0.008$	$c = 2m\omega\zeta$
$m = 479 \text{ kg/m}$	$k = \omega^2 m$
$\omega = 60 \text{ rad/s}$	$C_{L\alpha} = 2\pi$

Example of Fig. 1:



**Figure 1:** Characteristics of the wing section

Diagrams or figures should be located within the paper. The figures should have a resolution at least of 300 dpi.

## 2.3 Equations

Equations should be prepared in Word with the appropriate equation editor. Each equation should occur on a new line with uniform spacing (10pt) from adjacent text as indicated in this template. The equations, where they are referred to in the text, should be numbered sequentially and their identifier enclosed in parenthesis, right justified as indicated below. The punctuation should be used in equations as they were regular sentences. Example:... some text

$$E=mc^2. \quad (1)$$

Please pay attention that all variable references in text must be written the same style as in displayed equations.

The citation of figure(s), reference(s) and equation(s) have to be abbreviated as Fig. x; Ref. [x]; Eq. (x) or, in plural form, as Figs. x,y; Refs. [x,y]; Eqs.

(x,y) - where x, y stand for a number. Above phrases are typed in full word when they appear as the first word of sentence. Citation of table(s) is always written in full word - Table x or Tables x, y. Please be consistent in the use of capital letters, abbreviations and punctuation.

## 2.4 Units

Please use SI – units throughout the paper.

## 3 General Style Preferences

### 3.1 Style of Writing

Papers are accepted on the basis that they match high international standards of scientific writing. The author himself is responsible for the correctness of the scientific content.

Abbreviations should be spelt out in full the first time they appear and their abbreviated form included in brackets immediately after. Do not use more than three level depth of headings.

### 3.2 Paper Length

The paper, including the title page, figures and tables should be **exactly 4 pages (not more and not less)** and should be handed over during the Conference in **2 hard copies and one electronic copy on a CD-ROM.**

## Acknowledgments

The present guidelines represent a modified and abbreviated version of the celebrated and highly successful guidelines, which were originally developed, prepared and transmitted by the Organizers of the International Conferences on Thermal Stresses (TS), particularly by Professor Y. Tanigawa, Chairman of the TS2001, Osaka, Japan, and Prof. L. Librescu, Chairman of the TS2003, Blacksburg, VA. The Organizing Committee of 3ECSC would like to express its sincere appreciation for this pioneering work.

## 4 References

The papers in the reference list must be cited in the text. In the text the citation should appear in square brackets “[ ]”, as in, for example, ‘...In Ref. [2] an investigation of the stability and chaos for wheel suspension was presented...’ In the Reference list the font size should 10pt. Author names should be terminated by a ‘full stop’. The citation number should be enclosed in brackets.

The book titles should be in italics, followed by a ‘full stop’. Proceedings or journal titles should be in italics. For instance:

## References



